



EXTREME
CRANE LUBE

WWW.EXTREMECRANELUBE.COM

The EXTREME CRANE LUBE System

What Is Extreme Crane Lube?

- **Extreme Crane Lube is a “*Specialty Lubricant*” used for lubricating telescopic crane sections and booms**
- **It’s a lubricant that works “Better Than Grease!”**
- **It’s a lubricant that is applied by using a pump sprayer, aerosols, or a Sure Shot sprayer**
- **It’s an Advanced Lubricating System that is changing the way crane maintenance is done. Allowing businesses to maintain their equipment easier, while spending less time and money on maintenance.**

It’s the Easiest product in the world to use and its the Best One For The Job!

SIMPLE TO USE!



Product Comparisons - “*ECL* vs Grease”

Why Does Extreme Crane Lube Work Better Than Grease?

- **Faster Application Times**
- **Lasts 2 to 3 times longer in harsh weather and conditions**
- **Doesn't Dry Out.**
- **Doesn't Freeze and can be applied in sub-zero temperatures**
- **Doesn't Scrape Off or Run**
- **Water Proof**
- **Is NOT made with Moly Powder (molybdenum) which causes your lubricant to dry out, and “Cake Up.” Major problem in the crane industry.**
- **No expensive equipment needed to spray the product.**
- **Self sufficient application. No additional power supply needed to operate, for example; Gasoline/Diesel for a Generator that runs a Compressor, that powers a Spray Gun. (AKA – THE OTHER GUYS)**
- **No setup time or other equipment needed. Grab your sprayer and GO!**
- **The money saved in labor, more than pays for the product!**

How To Use ***EXTREME CRANE LUBE***

Use caution when working with this product. It is flammable while spraying. No smoking, open flames, or sparks around the area where Extreme Crane Lube is being applied. It becomes Non Flammable after about 30 seconds of being sprayed. Store out of direct sunlight or in appropriate Flammable Safe Cabinets if available and required. Refer to the SDS for more safety information.

- **1. Shake Container of Extreme Crane Lube for a few seconds before use.**
- **2. Pour Extreme Crane Lube into a pump sprayer applicator of choice. Manual or pneumatic sprayers only. Recommended sprayers are “CHAPIN” brand sprayers, models #1949, #1280 & #1180. Smaller applications use an aerosol can or “SURE SHOT” sprayers.**
- **3. Pump the sprayer up to the desired pressure. Higher pressure will help atomize the product, giving you a better spray pattern and more complete coverage.**
- **4. Apply One Coat. Extreme Crane Lube is designed for a minimum of one coat per application, which will allow less scrape off and material waste. The product can be double coated. However, If it starts to sag or run, too much product has been applied. Use protective gear as necessary.**
- **5. Clean up: Pour remaining product back into original container, or simply leave contents in the sprayer. Release all pressure in the sprayer to avoid incidentally spraying the product. Clean sprayer nozzles only when clogged.**

NOTE: You do not have to clean the boom sections off in order to apply this product. However, *it will Last Longer if you start with a clean surface.* If only Extreme Crane Lube is on the boom, its fine to reapply without cleaning it off. Other products can absorb Extreme Crane Lube if its applied over-top of existing grease products.

Recommended Sprayers



#1949
16" Fan Pattern

3.5 Gallon



#1280
Adjustable Cone Pattern

2 Gallon



#1180
Adjustable Cone Pattern

1 Gallon

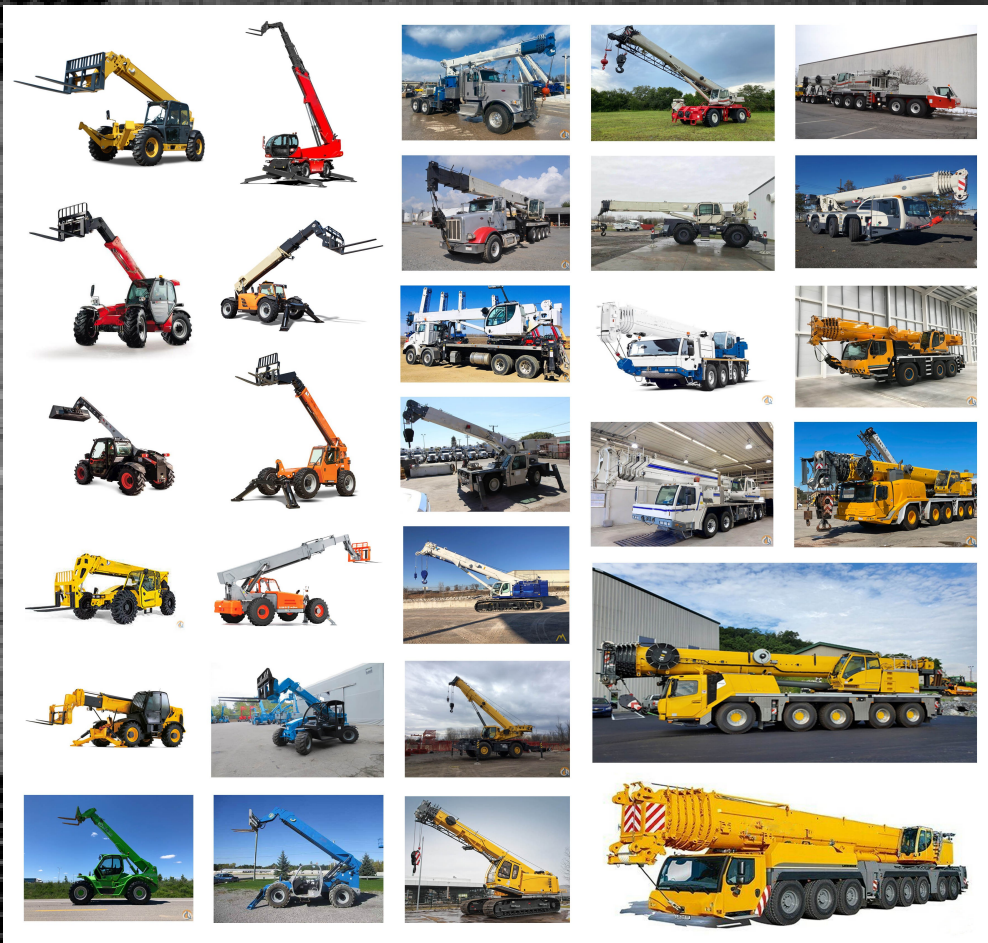


#A1000B
Cone Pattern – Non Adj.

1 Quart

WHERE TO USE EXTREME CRANE LUBE

- Telescopic Cranes
- Tele-handlers
- Aerial Lifts
- Fork Lifts
- Crawlers
- Scissor Lifts
- Open Gears
- Pins – Bushings
- Low Speed Chains
- Slide Outs / Outriggers
- 5th Wheel Plates and More!



Available Options



Bulk: 5-gallon Pails



**Aerosol Cans: 15oz cans
12 cans per case.**

Useful Links – Contact Info

Website: www.extremecranelube.com

Application Video Link:

<https://youtu.be/3OXewk8F0CQ?list=TLGGZsY17NDT1ksxNTAzMjAyMQ>

SDS Information :

<https://www.extremecranelube.com/50765.pdf>

TDS Information

https://www.extremecranelube.com/ECL_TDS_2021.pdf

Special Instructions:

https://www.extremecranelube.com/Extreme_Crane_Lube_Special_Instructions_2020.pdf

If you have any questions or concerns please contact us:

[*info@extremecranelube.com*](mailto:info@extremecranelube.com)

THANK YOU !

PRIVILEGE AND CONFIDENTIALITY NOTICE: The information contained in this message may be privileged and it is confidential and protected from disclosure. To the extent that the recipient of this message is subject to any confidentiality or nondisclosure agreement with the sender, this notice constitutes such marking or other notice as may be required under such agreement of the confidential or proprietary nature of this message or any attachments hereto. If the reader of this message is not the intended recipient or an employee or agent responsible for delivering this message to the intended recipient, you are hereby notified that any dissemination, distribution, use or copying of this communication is strictly prohibited. If you have received this communication in error, please notify us immediately by replying to the message and deleting it from your computer and destroying any other copies thereof.

